



2010 Sabre 42 Hardtop Express

Boat Type: Downeast

Address: Portland, ME, US

Price: \$495,000



OVERVIEW

2010 Sabre 42 Hardtop Express

Unique opportunity to acquire a very special and versatile boat. The equipment list would provide a vessel that will satisfy the demands of a serious cruiser, but a layout and ease of use that will be a perfect day or weekend boat.

Extremely well maintained by a seasoned owner. "Great condition" is just an understatement, make this incredible full-equipped Sabre yours!

Notable Features:

*Flag Blue Awlgrip Hull Paint (Fall 2016)

*Freedom lift (remote control) with AB inflatable and Euro Helm / 20Hp Honda

*Galley updated with 2-drawer refrigeration as well as a freezer in the engine space

*SureShade electric retractable cockpit cover

*Full Raymarine Electronics Package with FLIR Nightvision Camera

*Cummins engines with Zeus drives

*Custom storage solutions through out the boat.

Additionally, EdVentures is outfitted with an attractive and complete decor package, a full set of paper charts (from Maine to Florida) as well as a supply of spare parts. She is truly turnkey.

If you are in the market for a late model Sabre with Cummins power and pod drives, look no further.

SPECIFICATIONS

Basic Information

Manufacturer:	Sabre	Vessel Name:	EdVentures
Model:	42 Hardtop Express	Boat Type:	Downeast
Year:	2010	Hull Material:	Fiberglass
Category:	Power	Hull Type:	
Condition:	Used	Hull Color:	
Location:	Portland, ME, US	Designer:	
Available for sale in U.S. waters:	Yes	Flag of Registry:	

Dimensions & Weight

Length:	42 ft - 12.8 meter	Draft - max:	3 ft 9 in - 1.14 meter
LOA:	-	Bridge Clearance:	-
Beam:	14 ft 4 in - 4.37 meter	Dry Weight:	-

Engine

Make:	Cummins	Engine Type:	Inboard
Model:	QSB59L	Drive Type:	Pod Drive
Engine(s):	2	Fuel Type:	Diesel
Hours:	655	Horsepower:	425 (Individual), 850 (combined)
Cruise Speed:	-	Max Speed:	-
Range:	-	Joystick Control:	No

Tank Capacities

Fuel Tank:	450 gallons - 1 tank(s)	Holding Tank:	60 gallons - 1 tank(s)
Fresh Water Tank:	160 gallons - 1 tank(s)		

Accommodations

Total Cabins:	-	Crew Cabins:	-
Total Berths:	-	Crew Berths:	-
Total Sleeps:	-	Crew Sleeps:	-
Total Heads:	-	Crew Heads:	-
Captains Cabin:	-		

DESCRIPTIONS

Steering System

Joystick Control

Custom Features & Options

Custom built woodwork throughout the vessel:

- Cherry box on the helm - 1 open and 1 with lock, located port side on the helm
- Cherry box to fit VHF Radio - located starboard side on the helm
- Cherry vertical chart holder located starboard / inboard of the Captain's chair
- Cherry vertical chart holder located port / inboard of the Mates chair
- Cherry shelf built to fit over galley countertop / sink area
- Cherry Vesselview mount - angled for better viewing

Personal Electronics Accommodations:

- Magnetic holder for iPad and cell phones at the helm

Other custom features added by the owner:

- Additional Freezer located in the engine room
- Flir Navigator II Pan/Tilt Thermal Image Camera
- Cup Holder on the Mates STIDD seat that folds out when needed
- Custom 9" x 34" mattress for the dinette/berth - stowed in master stateroom, adds comfort to the convertible berth on the dinette and fits custom over the berth cushions
- Custom mattresses in the master and guest cabins
- Stainless steel BBQ grille with custom rail mount
- Aft enclosure Strataglass hidden snaps and zips, upgraded zipper
- Fitted decor for both staterooms - including sheets/bedding

Factory Options:

- Teak deck on helm area
- Fold down seat in aft cockpit
- Electrically activated center windshield
- Additional dimmer switch at helm, master cabin and main salon
- Clarion CD/AM/FM stereo with four speakers and remote control
- Inverter/charger 3000 Watt Sine Wave with remote control
- Glendinning cord reel with remote for 50 amp cord
- Extra refrigeration at helm deck wet bar
- Mirrors inside top and bottom of head door to master stateroom
- Accord shades on opening ports

- Searchlight on hardtop mast
- Custom made salon table for additional sleeping berth
- Concorde Amber Martini glasline reading lights
- Helm has two reverse-cycle heat/air conditioning units

Hull & Deck

- Dark Hull / Flag Blue
- Anti-skid color (fore and side deck, aft cockpit, coamings and hardtop) Beige
- Aft enclosure Strataglass hidden snaps and zips, upgraded zipper
- SunShure Front Windshield/Side-Window covers
- Full cockpit mooring cover
- Exterior cushion covers
- Modified "V" hull design with 16 degree deadrise at transom.
- ISO-NPG Sport Yacht white gel coat and vinyl ester backup resin.
- Knitted, bi-axial fiberglass laminates.
- Vacuum-bagged Airex C70 PVC foam core in running surfaces and topsides.
- Foam/plywood cored fiberglass stringer system with steel caps at engine mounts
- Fiberglass swim platform with SS telescoping swim ladder and two fold down cleats
- Hull side rubbing strakes.
- PVC rub rail with stainless steel cap.
- Imron, split boot stripe.
- Isophthalic gel coat.
- Knitted, bi-axial frp laminate with end grain balsa core.
- Molded-in anti-skid deck surfaces.
- 1-1/4" diameter stainless steel rail system.
- Fiberglass bow pulpit with double anchor roller.
- Two anchor rode, fender and dock line lockers forward
- Lewmar anchor windlass with rope/chain gypsy; Anchor has 250 ft of 5/16" chain
- Back-up anchor is a Danforth folding anchor with chain and rode
- (3) Hinged cockpit locker hatches with stainless gas struts.
- Hinged, inward opening transom door to swim platform.
- Flag staff holder and teak staff.
- Lewmar Coastline polished aluminum hatches with screens.
- Custom stainless steel opening ports with screens.
- Navigational electronics mast on hard top
- Bow and stern chocks.
- Custom stainless steel spring line chocks.
- Teak toe rail and teak cabin side eyebrow.
- Hot and cold transom shower
- Salt water wash down fore and aft
- Shore water system with filter
- Single Seagull water purifier on galley cold water
- Single Seagull water purifier on ice maker

Salon

- "L" settee inlaid table.

- UltraSuede upholstery main salon only - "Cologne"
- Storage under "L" settee
- Custom made salon table for additional sleeping berth
- Sabre tool drawer
- Lockers outboard of berth back with louvered doors
- Sound deadening headliner panels.
- 20" LCD TV and DVD player in salon. Includes TV inlet

Galley & Dinette with Convertible Berth

- L-shaped galley to port.
- High-pressure laminate galley countertop -Corian Sahara
- Double Scandvik stainless steel sink with single lever with Scandvik faucet.
- Custom made salon table for additional sleeping berth
- Built-in waste basket.
- Drawers and locker storage below counter.
- Lockers outboard and above counter.
- Seaward, Gourmet 2-burner electric cook top (#G2247D).
- Microwave/convection oven.
- Under counter, 2-drawer refrigerator/freezer 12v/120v
- Stainless steel towel rack added

Staterooms

MASTER STATEROOM

- TV with DVD connected to DirectTV
- Island berth with custom Memory Foam mattress upgrade
- Drawers and locker storage under berth.
- Direct access to head.
- Storage lockers outboard and above berth.
- Hanging locker (cedar lined) with louvered door.
- Cherry hull ceilings
- Bureau with locker over.
- Passageway door to main salon.
- (3) 120V outlets (1 Standard - 2 added)

GUEST CABIN

- Double berth with upgraded foam mattress.
- Drawers and storage under berth.
- Bi-fold entry door from salon
- Bureau with drawers Mirror above and cabinet behind mirror
- Storage lockers outboard below deck line
- Hanging locker (cedar lined).
- Two opening ports and one overhead hatch

Head

- FRP vanity sink with Delta single-lever faucet.
- Corian vanity countertop.
- Wood trimmed, adjustable mirror.
- Mirrors inside top and bottom of head door to master stateroom

- Circular shower stall with clear plexiglass door.
- Shower seat and wet locker outboard.
- Scandvik shower mixer control.
- Electric shower sump pump.
- Fiberglass sole with anti-skid in head compartment.
- Storage lockers.
- Towel bar.
- Ventilation blower.
- Holding tank "full" indicator.
- Jabsco Quiet-Flush electric MSD (freshwater flush).
- Incremental tank gauge on head

Decor

- Varnished cherry interior.
- Teak and holly cabin soles with two coats of sealer.
- Soft headliner panels (except head and shower stall).
- Screens on all opening windows, ports and hatches.
- Optional fabric and drapery selections.
- Dovetailed maple drawers with drawer slides and push button latches.
- Wood handholds throughout.

Navigational Electronics

- 2 Raymarine E120w with 2 GPS and preloaded charts
- Ray 4Kw 24" Super HD digital Radome antenna
- Ray DSM 300 Digital Sounder Module
- Ray B60 Dual Freq Depth/Temp transducer
- Ray ST60 Tridata with DST 800 Brnz tilted transducer
- Icom M604 with hailer, fog and remote
- Shakespeare 8' antenna with SS ratchet mount
- Ray Sr 1'00 Sirius Weather receiver and SRA40 antenna
- SS mount for receiver
- Flir Navigator II Pan/Tilt Thermal Image Camera
- Powder coated Camera mount (same design as radar mount)
- Video Interface for E series displays
- Direct TV (M1 Satellite) with 2 receivers

Mechanical

- Cummins Zeus 3500 propulsion system with Smart joystick, engine sync, autopilot, autotrim control, cruise control, trolling valves, electronic compass, GPS receiver, Cummins QSB 425hp engines, drive by wire helm with tilt steering
- Reverso oil change system

Electrical & Plumbing

120-VAC ELECTRICAL SYSTEM

- 50-amp, 240-VAC shore power inlet and 50 ft. cord.
- Bass illuminated main circuit breaker distribution panel
- 120-VAC outlets in each cabin and engine room. Galley, head, engine room receptacles are GFI protected.
- Charles Industries 50-amp/3-bank battery charger.

- 11.5-kw Onan generator with water lift muffler, intake strainer, sound shield, transfer switch and dedicated start battery.
- Below deck reverse cycle heat/air conditioning in (2)zones

12-VDC ELECTRICAL SYSTEM

- Two group 31, dedicated, lead acid, engine start batteries.
- Two 8D, Lifeline AGM, deep cycle ships batteries.
- Battery disconnect and emergency crossover switches in engine room.
- Bass illuminated main circuit breaker distribution panel
- 12-volt lighting system with Cantalupi Jeny overhead lights and Danish Cabin reading lights.
- Cockpit courtesy lights.
- 12-volt horn.
- Navigation lights: side, steaming, stern and 360 degree anchor light.
- Marinc Sealink 12-VDC outlet at helm.
- Tinned wire used throughout.

PLUMBING

- (3) Rule 2000 (2000 gph), automatic 12-VDC bilge pumps.
- Fresh water spigot in engine room.
- Two, roto-molded, polyethylene water tanks.
- Roto-molded, polyethylene holding tank.
- Marelon sea valves on thru-hull fittings below the waterline.
- Marelon discharge seacock with macerator pump.
- 11 gal. water heater operates on both 120-VAC and engine heat.
- Temperature control valve on hot water supply.
- 12-VDC hot and cold pressure water system.
- Groco Paragon Junior pressure water pump with PST-1 accumulator tank.
- Electric water tank level indicator.
- Helm deck air conditioning/heater system (2-12kbtu self contained units)
- Air conditioning/heater system below deck only 2 X 12K btu

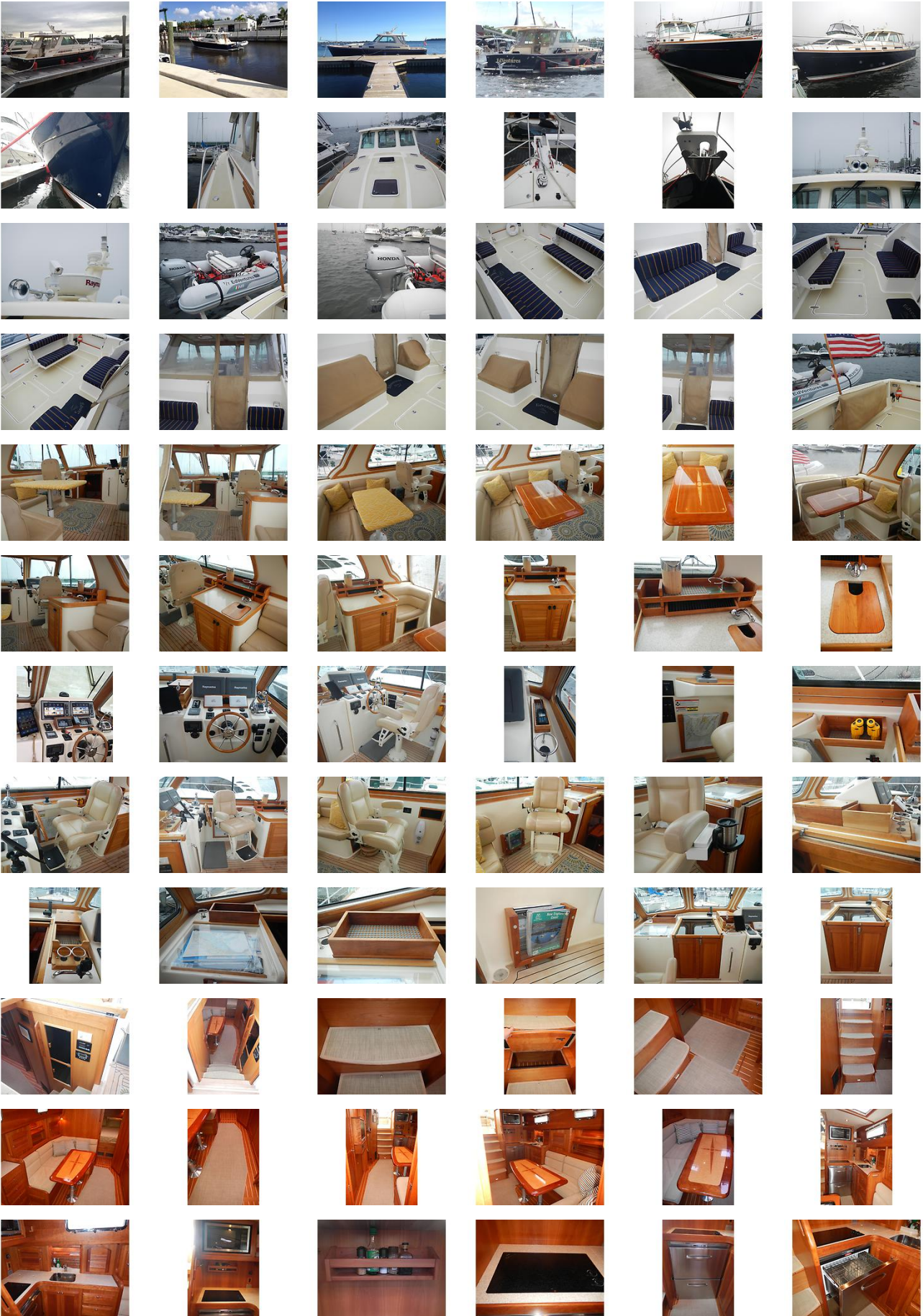
Disclaimer

The Company offers the details of this vessel in good faith but cannot guarantee or warrant the accuracy of this information nor warrant the condition of the vessel. A buyer should instruct his agents, or his surveyors, to investigate such details as the buyer desires validated. This vessel is offered subject to prior sale, price change, or withdrawal without notice.**customContactInformation**

Peter Ouellette, Listing Broker

207-318-0626

GALLERY





LOCATION MAP



PETER OUELLETTE
 DiMillo's Yacht Sales
 1 Long Wharf
 Portland, ME, US
 Office: 207-773-7632
 Mobile: 207-318-0626
 peter@dimillos.com

