

2017 Coastal Craft 45

Boat Type: Pilothouse

Address: West River, MD, US

Price: \$1,395,000



OVERVIEW

As one of the most popular vessels in the Coastal Craft line, the 45 embodies all of the qualities that have made Coastal Craft Yachts famous. Coastal Craft invites buyers to be involved in the planning stages of their new Coastal Craft 45 to choose finishes, colors and custom features insuring that your new yacht is a one-of-a-kind masterpiece that will represent value and a source of pride for years to come.

The 45 starts with a commercial quality welded aluminum planing hull that slices through choppy seas at speeds far exceeding the typical cruiser. The main helm station is roomy and comfortable, featuring a CCB doublewide seat, Edson wood-trimmed tilt wheel and joystick control. Additional control stations at the aft cockpit and flybridge also include joystick controls. The spacious flybridge is accessed by way of a gentle sloping stainless steel staircase from the aft cockpit. The upper deck offers seating for 10 along with a wet bar and sound system. The extended hardtop is home to the davit crane, dinghy and custom dinghy caulks. The folding radar tower holds a variety of different navigation and entertainment antennas and receivers to make for safe and comfortable passages.

The well-equipped salon and galley are open to the helm, enabling chef, guests and skipper to visit for an evening of fine dining. A drop down LCD TV and Bose sound system complete the entertainment. Teak and holly floors extend

from salon through the forward master stateroom, which is equipped with a queen berth surrounded by cherry cabinets and a private head and separate shower. A guest stateroom located below the salon features an oversized queen berth and adjacent guest head. The salon settee also converts to a queen berth enabling 6 people to sleep comfortably.

The 45 is powered by twin Volvo D6-435 high performance diesel engines equipped with Volvo IPS 600 drives. This innovative drive system utilizes forward facing Duo-props that run parallel to the hull, drawing un-disturbed water from a flat, hydrodynamic hull surface. A joystick control rotates the drives independently allowing effortless control for maneuvering and docking – including the ability to supply thrust directly sideways, eliminating the need for a bow or stern thruster. Volvo's Dynamic Position System offers virtual anchoring and will hold the vessel's position stationary even in a strong wind or in a tidal current.

The 45 offers a top speed of 30 knots and efficient continuous cruising speeds between 8 and 28 knots. Equally impressive is her fuel efficiency of 1 mile per gallon at 27 knots and near 3 miles per gallon at 8 knots.

All Trades Considered

SPECIFICATIONS

Basic Information

Manufacturer:	Coastal Craft	Vessel Name:	Coastal Craft 45
Model:	45	Boat Type:	Pilothouse
Year:	2017	Hull Material:	Aluminum
Category:	Power	Hull Type:	
Condition:	New	Hull Color:	
Location:	West River, MD, US	Designer:	
Available for sale in U.S. waters:	Yes	Flag of Registry:	

Dimensions & Weight

Length:	45 ft - 13.72 meter	Draft - max:	3 ft 10 in - 1.17 meter
LOA:	-	Bridge Clearance:	19 ft 6 in - 5.94 meter
Beam:	15 ft 3 in - 4.65 meter	Dry Weight:	-

Engine

Make:	Volvo	Engine Type:	Inboard
Model:	IPS 600	Drive Type:	Pod Drive
Engine(s):	2	Fuel Type:	Diesel
Hours:	-	Horsepower:	435 (Individual), 870 (combined)
Cruise Speed:	31 MPH	Max Speed:	38 MPH
Range:	-	Joystick Control:	No

Tank Capacities

Fuel Tank: 460 gallons - 1 tank(s) Holding Tank: 28 gallons - 1 tank(s)
Fresh Water Tank: 100 gallons - 1 tank(s)

Accommodations

Total Cabins:	2	Crew Cabins:	-
Total Berths:	1	Crew Berths:	-
Total Sleeps:	-	Crew Sleeps:	-
Total Heads:	2	Crew Heads:	-
Captains Cabin:	-		

DESCRIPTIONS

Specifications and Factory Options

Construction

- Marine aluminum construction
- Sounddown® hull, deck and cabin insulation
- Alexseal® Shark Gray & Oyster White Cabin
- Interlux ® Micron CSC antifouling bottom paint

Deck Hardware

- Fittings all in 316 stainless steel
- 3" D-Rubber fender rail around swim step
- Nine 12" billet aluminum deck cleats (welded)
- 55 lb Delta® anchor
- Anchor windless (three station remote)
- 200' chain and 200' x 5/8" rope
- Pulpit with anchor roller assembly
- Safety glass (tempered) windshield
- Side windows (4 sliding, 2 non-opening) tinted
- Rear windows (2 sliding, 1 non-opening) tinted n Hinged rear door with full height window tinted
- "Lewmar" deck hatches (2x20", 2x12") in foredeck
- Non-slip deck coatings on side and foredeck

Aft Cockpit

- Self-bailing cockpit with deck scupper drains
- Steps from cockpit deck up to side decks
- Transom lounge seat (L shaped)
- Teak table on stainless steel pedestal
- Cockpit Hardtop with ceiling down lights
- Handheld fire extinguisher
- Hinged transom door
- Engine and storage locker deck hatches
- 42" swim platform (integral hull design)

- Boarding ladder (under swim step mounted)
- Four Imtra Vixen LED courtesy lights (low level)
- Hot/Cold shower
- Fresh water wash down hose bib

Fly Bridge

- Stainless steel staircase with sliding overhead deck hatch
- Deck drains
- Non-slip deck coatings
- Lexan (tinted) windscreen/visor
- Three Stidd® seats with armrests and covers
- Settee arrangement with teak slat table with covers
- Lounge seating across from settee with cover
- Stainless steel handrails (1.25")
- Stainless steel radar arch with hinged base plates
- Upper helm console with cover
- Tilt steering
- Edson® Steering wheel
- Volvo® dual engine controls
- Volvo® EVC panel
- Volvo® Joystick
- Humphree Controls
- Ritchie® D55 Compass
- Three stainless steel drink holders
- Imtra® Vixen LED courtesy lights (low level)
- Sunbrella® covers on seating and table

Salon

- Interior cabinets and panels are finished in cherry
- Teak and Holly flooring
- Cherry window frames
- Oceanair® window blinds mounted in valances
- Majilite® ceiling panels
- Double-wide helm seat with armrests (joystick mount)
- Storage cabinet with drawers in helm seat cabinet
- Port side doublewide passenger seating (forward)
- Port side U-shaped settee (seating for 5)
- Ultra-Leather™ upholstery in Salon
- Starboard galley (L-shaped)
- Fusion® entertainment system
 - MS-IP700i
 - Bluetooth
 - Four interior speakers with sub cockpit speakers
 - Flybridge speakers and remote panel
- 32" LCD TV in recessed ceiling cabinet
- Pioneer Blu-ray
- 20 Imtra® Ventura LED ceiling lights on dimmer
- Two Imtra® reading lights
- Mechanical compartment (under salon floor)

Galley

- Galley includes L-shaped lower cabinets n Pantry (pull out) in helm seat bulkhead
- Five drawers and one cupboard
- Brushed stainless flush latches (square)
- Corian® countertops and back splash
- Novakool® fridge/freezer (7.5 cu/ft side by side)
- Seward® electric cook top stove (3 burner)
- Built-in Panasonic® convection microwave
- Stainless steel (double) under mount galley sink
- Grohe® Galley faucet (single lever)
- Two AC outlets

Master Head

- Vanity includes lower and upper cabinet
- Vanity drawers and mirrored upper cabinet doors
- Corian® countertop and backsplash
- Stainless steel under mounted vanity sink
- Vanity faucet and soap dispenser
- Full size electric toilet
- AC outlet
- Towel bar
- Two Imtra® Ventura LED ceiling lights, (3) vanity lights
- Overhead 12" deck hatch with screen

Forward Shower

- Watertight shower stall with seat
- Wall mounted mixing valves and shower head
- Towel (dry) locker
- Towel bar
- Shower sump discharge pump
- Two Imtra® Ventura LED ceiling lights
- Overhead 12" deck hatch with screen

Day Head

- Cherry finished joinery
- Window blinds with valances
- Vanity includes lower cabinet
- Vanity drawers and upper mirror
- Corian® countertop and backsplash
- Vanity under mount sink
- Vanity faucet and soap dispenser
- Full size electric toilet
- AC outlet
- Towel bar
- Opening window (opaque)
- Majilite® ceiling panels
- Two Imtra® Ventura ceiling lights and vanity lights

- Teak and Holly flooring

Master Stateroom

- Island berth (66" x 78") with 8" mattress
- Step platforms on either side of berth for easy access
- Port full height locker with shelves
- Starboard full height hanging locker
- Four drawers under foot of berth
- Upper side cabinets/lockers
- 24" LCD TV with DVD
- Two 20" deck hatches with Oceanair® screen/shade
- Majilite® ceiling panels
- Eight Imtra® Ventura LED ceiling lights on dimmer
- Two Imtra® reading lights

Guest/Aft Stateroom

- Twin 30" x 78" berths (with filler cushion)
- Hanging locker with shelves
- Bookshelf with locker doors
- Stateroom finished in Cherry
- Majilite® ceiling panels
- Imtra® Hatteras LED ceiling lights
- Two reading lights

Main Helm Console

- Volvo® tilt steering
- Edson® 3 spoke steering wheel
- Volvo® electronic engine controls
- Volvo® EVC panel
- Volvo® joystick (helm seat armrest)
- Switch panel
- Humphree Trim Controls
- Ritchie® Navigator Compass

Navigation electronics

- Two Garmin 8617 Displays
- Garmin GMR 24 xHD Radar
- Garmin AIS600 Transceiver
- Garmin GXM52 Weather
- Volvo® Autopilot with Joystick Steering
- Two Gemeco® CHIRP thru hull transducers (Med & High)
- Garmin® 300 VHF with Two GHS10 remote mics

Mechanical Equipment and Systems

- Northern Light 9KW generator with sound shield
- Centek® waterlift and water/gas separator mufflers
- Two Racor® FG900 (dual) fuel/water (engines)

- Racor® FG500 fuel/water filter (generator)
- Windshield wipers with stainless steel arms and blades
- Windshield washer system Electric air horn
- Humphree Vessel Trim System (500 mm tabs)
- Four Rule® Bilge pumps (2000 gph, auto/man)
- Whale® manual bilge pump
- Soundown® engine room insulation
- Polyurethane (two part) foam insulation

Tankage

- 460 USG fuel tank with sender (aluminum)
- 100 USG domestic water tank (stainless steel)
- 28 USG waste tank with sender (plastic)
- 6 USG hot water tank (stainless steel)

Propulsion

- Two Volvo® IPS600 (D6-435 diesel engines)
- Three Volvo® joysticks (helm locations)
- Volvo® Dynamic Positioning System (DPS)
- Volvo Slow Speed Maneuvering
- Volvo Cruise Control

Electrical Equipment and Systems

- 24V DC house and engine systems
- Victron® (Lithium) 24v @ 720AH House Battery
- Four Energy1® (AGM) 12v Engine Start Batt
- Energy1® (AGM) 12V Generator Start Batt 240V/50A Shore Power
- C-Zone® distributed power and digital switching
- Victron® 8KW Quattro inverter/200 amp charger
- Two ProNautic® Charger (engine and generator)
- Charles® Iso-Transformer
- Navigation lights (LED)
- ITT Jabsco® 6" Searchlight
- High water bilge alarms
- High temperature alarms in engine room
- Fireboy® fire suppression (engine room)
- ITT Jabsco® domestic water pump
- Imtra® LED ceiling lights on dimmers
- Imtra® LED lights in engine/machine space

Climate Control

- Windshield defrost system (engine source heat)
- Two Cruisair®12K air conditioning (salon)
- Cruisair®6K air conditioning (forward)

Miscellaneous

- Four boat fenders with sock and lines
- Six mooring lines (5/8" x 20')
- Life ring / throwing line
- Flagstaff and holder
- Owner's manual
- Tool kit and spares kit
- Carbon monoxide/smoke detectors

Warranty

- 10 YEAR LIMITED
 - Aluminum Structure
- 2 YEAR LIMITED
 - Paint Finishes
 - Wood Joinery
 - Interior & Exterior Upholstery
 - Machinery/Electrical Systems
- All warranties transferable

Factory Options & Upgrades Included

- U- Line® icemaker in cockpit
- Garmin® 8617 17" display (2nd display in lower helm)
- Cockpit canvas enclosure with Rainer panels
- Cruiseair® 12K BTU air conditioning in cockpit
- Your choice of Steelhead Crane or a Freedom Lift
- Interior teak joinery upgrade (replaces cherry)
- Interior teak plank flooring upgrade (replaces teak & holly)
- Humphree® Active Ride Trim System with Auto Trim & CTOS
- Fly Bridge Summer Kitchen (BBQ/Fridge/Sink) with cover
- Removable rails around the perimeter of the aft flybridge area
- Freight, Make Ready & Commissioning Included

Disclaimer

The Company offers the details of this vessel in good faith but cannot guarantee or warrant the accuracy of this information nor warrant the condition of the vessel. A buyer should instruct his agents, or his surveyors, to investigate such details as the buyer desires validated. This vessel is offered subject to prior sale, price change, or withdrawal without notice.**customContactInformation**

For additional details, please contact the office of DiMillo's Yacht Sales today.

Portland, Maine - (207) 773-7632

Freeport, Maine - (207) 865-0432

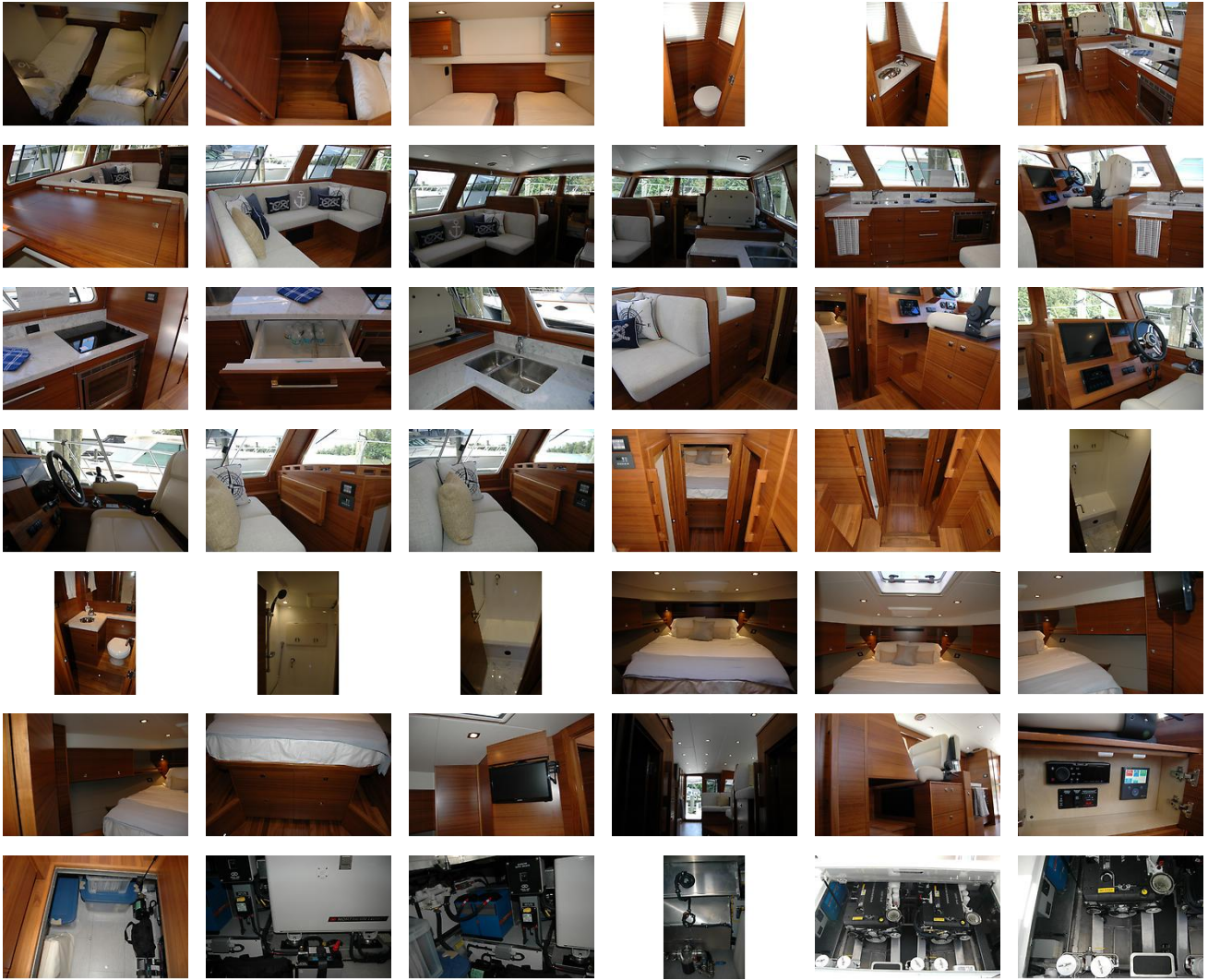
Glen Cove, NY - (516) 623-6256

Oxford, MD - (410) 226-0100

West River, MD - (410) 267-1808

GALLERY





LOCATION MAP



DIMILLO'S YACHT SALES
 Portland, ME, US
 Office: 207-773-7632