



# 2013 Nordic Tugs 34

Boat Type: Trawler

Address: Glen Cove, NY, US

Price: \$299,999



## OVERVIEW

*This 2013 Nordic Tug 34 comes to market with a white hull*

### **"Our Trade"**

Ideal for long range cruising or cocktail sunsets, she is immaculate inside and out

Superior stability and fuel efficiency &#63; all wrapped up in classic style

Powered by a Yanmar 6 BY2 260 horsepower diesel engine with 250 hours

Just coming into our inventory, full details will be available asap

Please Note: Some of the current pictures and overall descriptions are provided by the manufactures and are not of the actual boat

If you would like to make an appointment to get on board or if you would like discuss the boat prior to publication of her inventory, please call or email me directly

## SPECIFICATIONS

### Basic Information

Manufacturer:	Nordic Tugs	Vessel Name:	34 Nordic Tug
Model:	34	Boat Type:	Trawler
Year:	2013	Hull Material:	Fiberglass
Category:	Power	Hull Type:	
Condition:	Used	Hull Color:	
Location:	Glen Cove, NY, US	Designer:	
Available for sale in U.S. waters:	Yes	Flag of Registry:	

### Dimensions & Weight

Length:	34 ft - 10.36 meter	Draft - max:	3 ft 8 in - 1.12 meter
LOA:	-	Bridge Clearance:	-
Beam:	11 ft 4 in - 3.45 meter	Dry Weight:	15700 ft - 4785.36 meter

### Engine

Make:	Yanmar	Engine Type:	Inboard
Model:	6 BY2 260	Drive Type:	Direct Drive
Engine(s):	1	Fuel Type:	Diesel
Hours:	339	Horsepower:	260 (Individual), 260 (combined)
Cruise Speed:	8 MPH	Max Speed:	-
Range:	600 MI	Joystick Control:	No

### Tank Capacities

Fuel Tank:	205 gallons - 1 tank(s)	Holding Tank:	-
Fresh Water Tank:	100 gallons - 1 tank(s)		

### Accommodations

Total Cabins:	-	Crew Cabins:	-
Total Berths:	-	Crew Berths:	-
Total Sleeps:	-	Crew Sleeps:	-
Total Heads:	-	Crew Heads:	-
Captains Cabin:	-		

## DESCRIPTIONS

### Manufacturer Provided Description

If you're looking for a trawler to fulfill your quest for adventure, look no further than the Nordic Tug 34. It's spacious enough to sleep two couples comfortably and features a roomy salon and galley for entertaining, yet is the ideal size for exploring shallow coves, navigating the Great Loop or cruising the scenic Alaskan coastline. Her pilothouse offers

panoramic 360-degree views and direct access to the deck She is outfitted with enough cruising power to get you moving in the teens while still being conservative on fuel A standard bow thruster allows for confident maneuvering and docking in close quarters Constructed with level of quality and detail that Nordic Tugs are known for, the Nordic Tug 34 gives you a solid, seaworthy ride that instills the confidence to chart the course for your next adventure

### **Electronics**

From her helm you have a clear view all around Her Furuno color chart plotter features radar and auto pilot

### **Deck**

Helm features a pilot door

Deck provides easy access all around

Anchor windlass

Aft Deck features a canvas bimini with extension over the aft door providing ample shade or protection from the weather

### **Galley**

Galley is light and bright with plenty of storage

### **Electronics**

Furuno Nav Net TZT14 Multi function Display

GPS Plotter , Radar

Furuno Autopilot Nav Net Pilot

Icom IC M504 VHF Radio

Fusion Stereo

### **Factory Options**

Oyster / Stars-N-Stripes Blue inset & waterline

Pony Mast -4'0" w Radar Mounting Bracket & Spreader Arms

Hatch-LEWMAR w/ Screen { Pilot House}

Shower- Cockpit

Windows-pair of sliding windows w/screens in lieu of fixed {fwd of PH sliding Door}

Wash-down,Sea Water- two outlets {one FWD & one aft}

Auto Pilot Pump- ACCU-Steer HRP-17-12

Oil Change System

Batteries,AGM

Lighting, Valance-LED 12VDC switched at aft door

AMTICO flooring Pilot House &Salon

Salon SAPELE valances in lieu of upholstered valances

Port light, 8 STAINLESS STEEL-w/ screens and drains in lieu of black plastic

Sundeck rails 1-1/4 x 30" height w/mid-rail and ladder

Transom Walk Through

Windlass- 1000w LEWMAR Pro- Series H1000

Fire Suppression System- Fireboy CG2-200-227

### **CUSTOM OPTIONS**

45% tinted windows DSG all but Pilot House Facing

Pilot House- SAPELE overhead hide-m-boards

Sapele covers for wire ways in FWD Pilot House

Sapele window trim rings on windshield

FORWARD CABIN , Full width V berth no filler sold top with draws under split mattress

INTERIOR , Day Night Shades

Glass doors Smoked on A/C and D/C panels not plastic

MECHANICAL & ELECTRICAL ,16000 btu AC unit in lower companionway storage area

Prep for future installation of generator through hull fittings, sea strainer,fuel line and RACOR filter and wires to A>C> breaker panel

SALON , overhead mounted TV flat panel 19 inch

This boat will have single 30 amp shore power connection

120 volt A/C breaker panel to be equipped CB for future installation

BERTH TO BE FULL TRIANGLE SHAPE

### **Disclaimer**

The Company offers the details of this vessel in good faith but cannot guarantee or warrant the accuracy of this information nor warrant the condition of the vessel A buyer should instruct his agents, or his surveyors, to investigate such details as the buyer desires validated This vessel is offered subject to prior sale, price change, or withdrawal without notice

**customContactInformation**

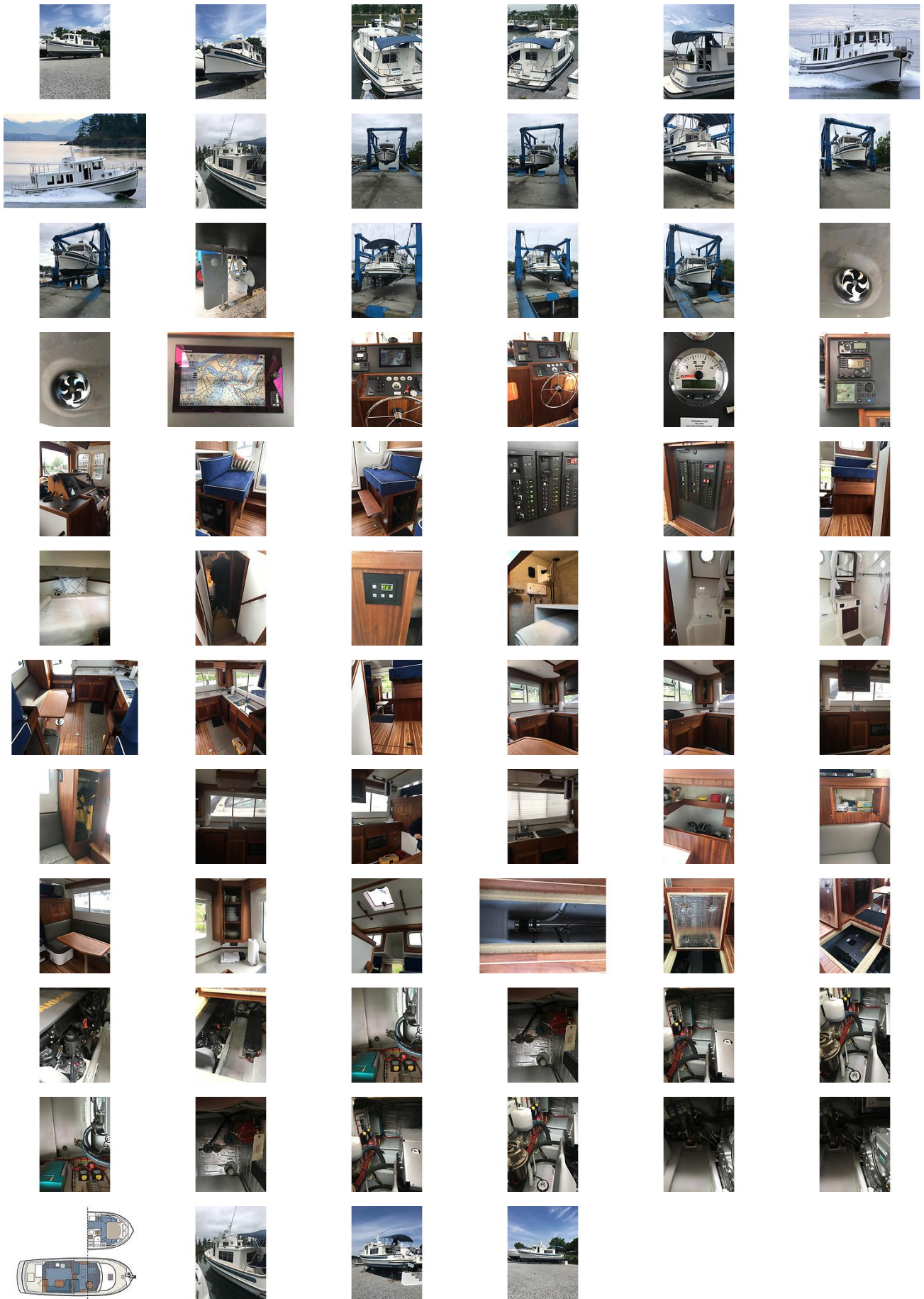
Mike O'Rourke: 631-935-4939

Email: [mike@dimilloscom](mailto:mike@dimilloscom)

## External Links

- [Manufacturer Website](#)Nordic Tugs Website
- [2013 Nordic Tugs 34](#)This 34 foot 2013 Nordic Tugs 34 is located in Glen Cove, New York. It is equipped with 1 260hpInboard 6 BY2 260 engine. Please call for the sale price of this Trawler.

# GALLERY



# LOCATION MAP





MIKE O'ROURKE  
DiMillo's Yacht Sales  
128 Shore Rd  
Glen Cove, NY, US  
Office: 516-623-6256  
Mobile: 631-935-4939  
mike@dimillos.com

